

Redefining what a RESC can be!

Created in 1966 under Connecticut General Statute 10-66a, **EdAdvance** is a public non-profit Regional Educational Service Center (RESC).

EdAdvance exists to promote the success of school districts and their communities. Collaboratively with them, we provide educational and related services. A continuing commitment to quality and excellence is our standard of performance.

To achieve our mission, we are committed to the “Three Cs”:

Connection

We actively listen to, engage with, and learn from our colleagues within the agency and our constituents across the region and state. This fosters and strengthens partnerships, leading to true understanding of our region.

Culture

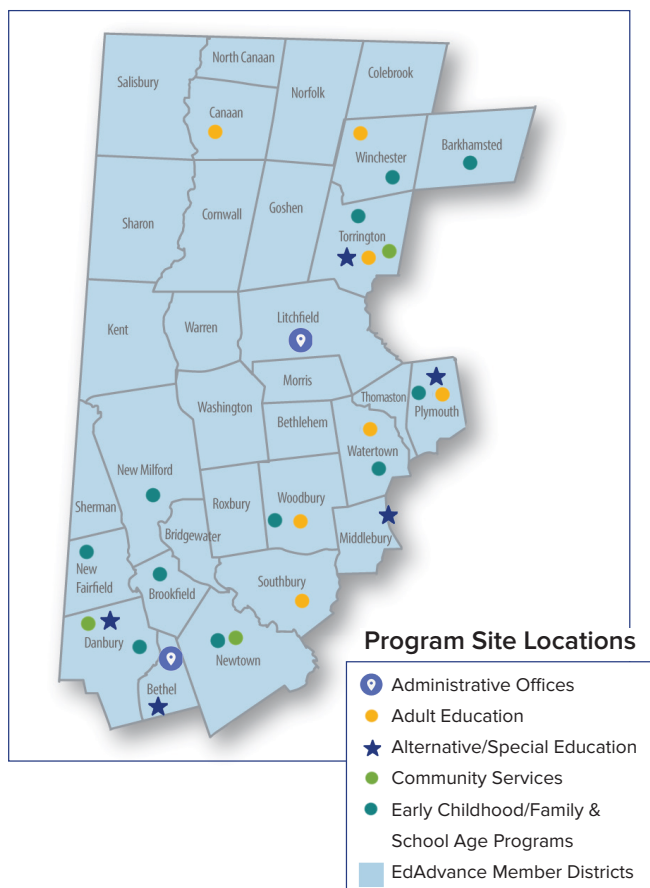
We strive to achieve “Systemness”, where everyone embraces and is committed to the success of our agency as a whole. This internal climate of cooperation is evident to our school district and community partners.

Customization

We focus on “Culture” and “Connection” to increase our capacity to provide flexible solutions, services, and supports tailored to the unique needs of the school districts and communities we serve and at the level of excellence they expect.

Our Service Area

29 School Districts; 32 Communities



For Schools & Districts:

- Food Services
- Professional Learning & Instructional Coaching
- Program Research & Evaluation Services
- Skills21
- Special Education Programs
- Transition Services
- Transportation Services

For Students & Families:

- BASES (Before and After School Extended Services)
- Birth to Three
- Community & Home Supports for Individuals with Disabilities
- Early Childhood & Family Programs
- Family Resource Centers & School Readiness Programs
- Head Start & Early Head Start
- Summer School & Extended School Year Programs

Specialized Services For Communities & Schools:

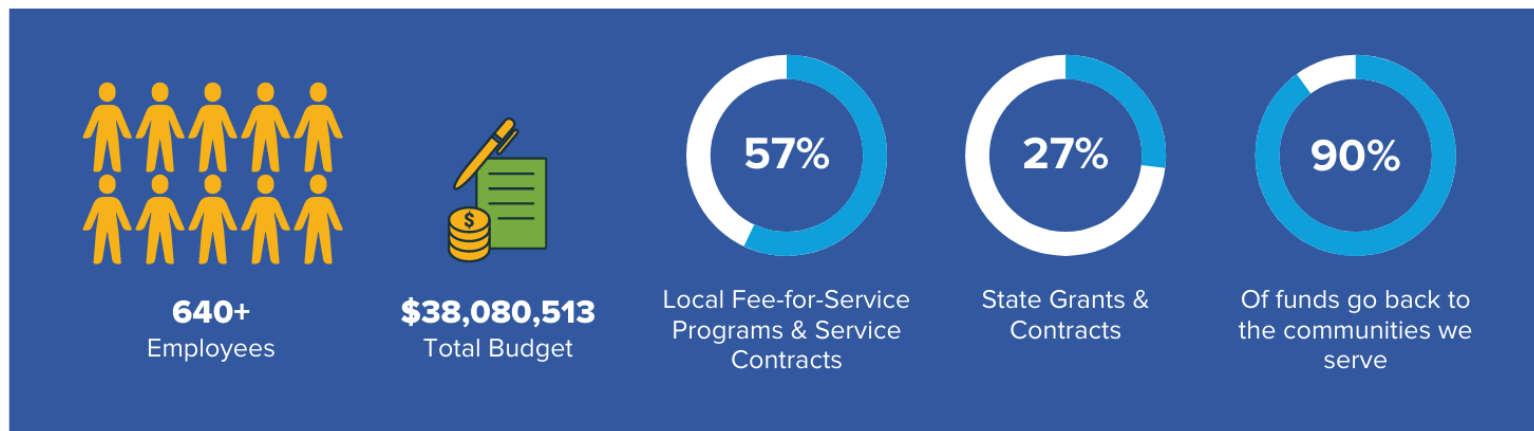
- Human Resources, Talent Recruitment, & Staffing Solutions
- Integrated Business & Operations Support
- Marketing & Communications
- Technology Services

For Adult Learners:

- Adult & Continuing Education Programs
- ATDN Professional Development
- Career & Technical Training
- High School Completion Programs (GED, HSDP, NEDP)

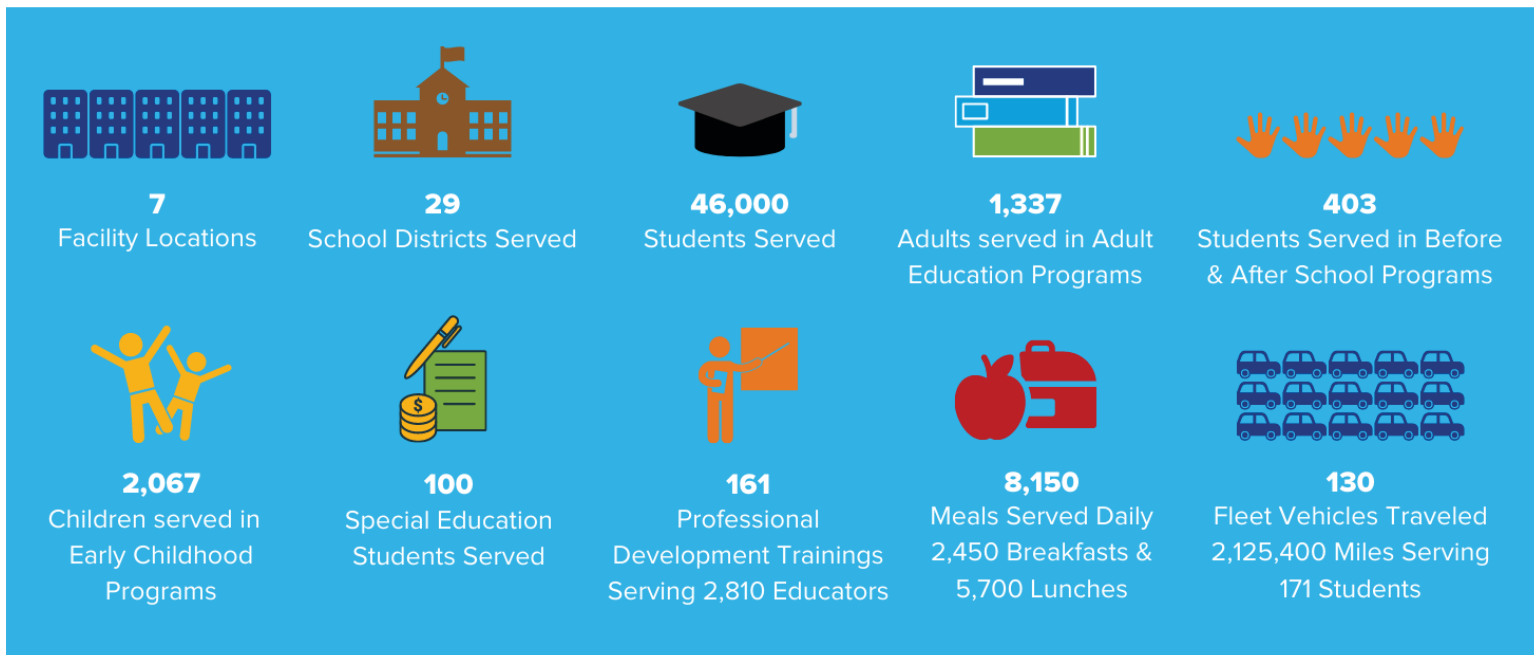
About Our Funding

EdAdvance does not receive any direct operational funding from the state. As the second largest non-profit employer in Litchfield County, EdAdvance contributes significantly to the local economy.



The graphics above show a majority (57%) of our funding originates from local fee-for-service contracts with school districts, while a much smaller portion (27%) is from State contracts. This represents a significant change that has transpired over the last four years. Our commitment to the “Three Cs” has increased our awareness of the needs across our region allowing EdAdvance to offer customized, high-quality supports and services that are cost-effective.

Our Programs



355 Goshen Road, P.O. Box 909, Litchfield, CT 06759-0909
860.567.0863 • www.edadvance.org

Jeffrey Kitching, Ed.D.
Executive Director
kitching@edadvance.org
860.567.0863 x1112

Richard Carmelich, III
Chief Operations Officer
carmelich@edadvance.org
860.567.0863 x1141

Jonathan Costa
Assistant Executive Director
costa@edadvance.org
860.567.0863 x1115

Tracey Lay
Chief Talent & Development Officer
lay@edadvance.org
860.567.0863 x1143